

CITY: HR DATE: 11/11/2011 PROJECT: 1873 U.S. COAST SURVEY MAP. POINT CABRILLO TO PUDDING CREEK, MENDOCINO COUNTY, CALIFORNIA. REGISTER NO. 1363 B. PROVIDED BY UNIVERSITY OF ALABAMA
 PROJECT # 8006133.0006.00001
 LOCATION: 1873 U.S. COAST SURVEY MAP. POINT CABRILLO TO PUDDING CREEK, MENDOCINO COUNTY, CALIFORNIA. REGISTER NO. 1363 B. PROVIDED BY UNIVERSITY OF ALABAMA
 DATE: 11/11/2011 2:05:50 PM

- LEGEND:**
- FACILITY BOUNDARY
 - CURRENT AQUATIC FEATURES
 - APPROXIMATE EXTENT OF HISTORICAL WETLAND FEATURES
 - APPROXIMATE EXTENT OF HISTORICAL CREEK FEATURES

DRAFT

SOURCE:
 1873 U.S. COAST SURVEY MAP. POINT CABRILLO TO
 PUDDING CREEK, MENDOCINO COUNTY, CALIFORNIA.
 REGISTER NO. 1363 B. PROVIDED BY UNIVERSITY OF ALABAMA

0 300 600 1,200
 Feet

FORMER GEORGIA-PACIFIC WOOD PRODUCTS FACILITY FORT BRAGG, CALIFORNIA MILL POND COMPLEX RESTORATION DRAFT CONCEPTUAL DESIGN REPORT	
HISTORICAL MAP WITH CURRENT AND HISTORICAL AQUATIC FEATURES	
	FIGURE 2-1



NOTES:
 1. WETLAND BOUNDARIES PREVIOUSLY DELINEATED BY WRA (2009) WERE APPROVED BY THE USACE ON MARCH 15, 2010 (USACE FILE # 2009-00372N).
 2. THREE-PARAMETER WETLANDS ARE DEFINED AS WETLANDS WHERE EVIDENCE OF WETLAND HYDROLOGY, HYDRIC SOIL, AND HYDROPHYTIC VEGETATION WERE PRESENT FOR TWO OR MORE OF THE THREE PARAMETERS LISTED BELOW.
 3. WETLANDS WITH EVIDENCE OF ONLY ONE OR TWO OF THE THREE PARAMETERS WERE DESIGNATED AS POTENTIAL WETLANDS.
 4. WETLANDS WITH EVIDENCE OF ONLY ONE OF THE THREE PARAMETERS WERE DESIGNATED AS POTENTIAL WETLANDS.
 5. WETLAND CHARACTERISTICS FOR WETLAND D-2 WERE ASSESSED FROM SOIL BORING P-22. DUE TO THE PRESENCE OF DENSE SHRUB AND BRAMBLE, WETLAND BOUNDARIES FOR WETLAND D-2 WERE DELINEATED FROM SOIL BORINGS P-21 AND P-22 AND VEGETATIVE CHARACTERISTICS IN AERIAL PHOTOGRAPHY. THEREFORE, THE BOUNDARIES OF WETLAND D-2 MAY CONTAIN AN UPLAND AND WETLAND MOSAIC.

LEGEND

- SOIL PIT LOCATION
- RIPIARIAN AREA
- POTENTIAL ENVIRONMENTALLY SENSITIVE HABITAT AREAS (ESHA)
- WIDTH OF POTENTIAL GROUNDWATER SEEP WATERS OF THE STATE (ARCADIS 2010; NOT YET APPROVED)
- POTENTIAL WET ESHA (ARCADIS 2010; NOT YET APPROVED)
- USACE JURISDICTIONAL WATERS/WETLANDS (WRA 2009; APPROVED BY THE USACE 3/15/10)
- NON-JURISDICTIONAL WATERS/WETLANDS (WRA 2009)
- SEASONAL WETLAND
- WETLAND SEEP
- INDUSTRIAL POND
- SEASONAL WETLAND DITCH
- RIPIARIAN WETLAND
- BEDROCK GROUNDWATER SEEP
- PERENNIAL WATERS
- THREE PARAMETER WETLAND
- AREA NOT EVALUATED BASED ON ONGOING CONSTRUCTION ACTIVITIES

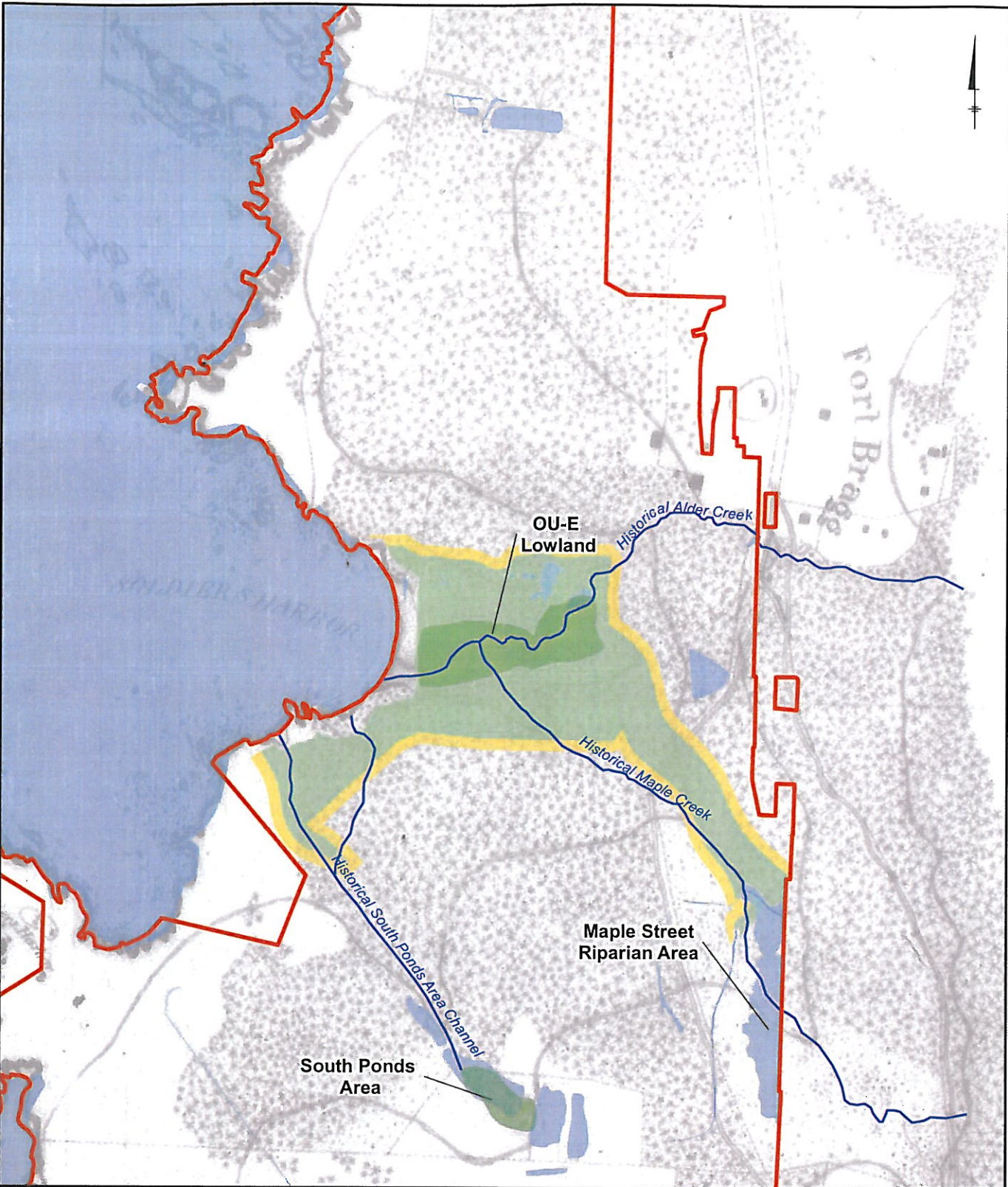
**FORMER GEORGIA-PACIFIC WOOD PRODUCTS FACILITY
 FORT BRAGG, CALIFORNIA
 MILL POND COMPLEX RESTORATION DRAFT CONCEPTUAL DESIGN REPORT**

POTENTIAL ENVIRONMENTALLY SENSITIVE HABITAT AREAS

DRAFT

GRAPHIC SCALE: 0, 300, 600 Feet

FIGURE 2-3



CITY: HR. DR. ...UP AT 015 DBBCO
 Project # 0000130000_0001
 File Path: \\C:\Users\paul\Documents\Conceptual Design Report\Fig_4-1_Habitats.mxd, 5/26/2011, 2:25:55 PM

- LEGEND:**
- FACILITY BOUNDARY
 - CURRENT AQUATIC FEATURES
 - PROPOSED MILL POND COMPLEX RESTORATION HABITATS
 - 50-FOOT BUFFER
 - APPROXIMATE EXTENT OF HISTORICAL WETLAND FEATURES

APPROXIMATE EXTENT OF HISTORICAL CREEK FEATURES

DRAFT

SOURCE:
 1873 U.S. COAST SURVEY MAP, POINT CABRILLO TO PUDDING CREEK, MENDOCINO COUNTY, CALIFORNIA, REGISTER NO. 1363 B. PROVIDED BY UNIVERSITY OF ALABAMA

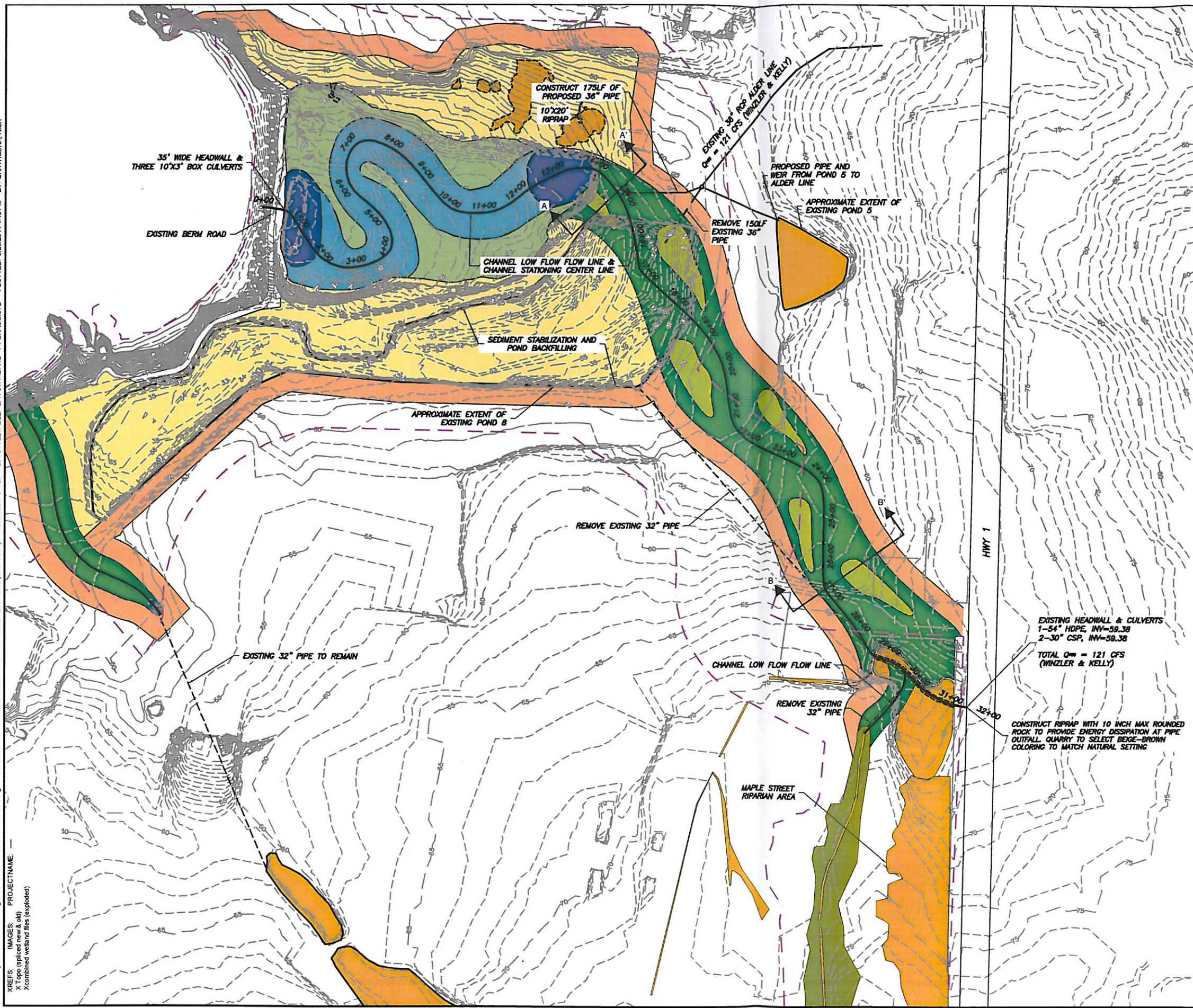
0 300 600 1,200
 Feet

FORMER GEORGIA-PACIFIC WOOD PRODUCTS FACILITY
 FORT BRAGG, CALIFORNIA
 MILL POND COMPLEX RESTORATION DRAFT CONCEPTUAL DESIGN REPORT

HISTORICAL MAP WITH HABITATS RESULTING FROM PROPOSED MPC RESTORATION

FIGURE
4-1

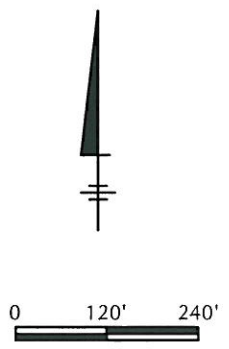
CITY (Reqd) DIV/GROUP (Reqd) DB (Reqd) LD (Opt) PM (Reqd) TM (Opt) LVR (Option) OFF-FRF-
 G:\emeryville\NWActive\design\001\B0006176\0016\Lowland R4.dwg ACADVER: 18.05 (LMS TECH) PAGESETUP: PDF PLOTSTYLETABLE: LFR STANDARD - FT BRAGG.CTB PLOTTED: 5/26/2011 4:48 PM BY: CARTAGENA, NICK
 XREFS: IMAGES: PROJECTNAME: X Topo (plotted new & old) X combined wetland files (exploded)



LEGEND:

	EXISTING EDGE OF ROAD
	EXISTING CONTOUR
	WETLANDS IDENTIFIED FOR ENHANCEMENT
	OPEN SPACE LAND USE
	RIPARIAN CORRIDOR
	FLOODPLAIN DEPRESSIONS
	PONDED AREAS
	HIGH MARSH
	LOW MARSH
	CONTOURED SLOPE/ SCRUB-SHRUB HABITAT
	WATER/WETLANDS DELINEATED ADJACENT TO THE MILL POND COMPLEX RESTORATION PROJECT
	RIPARIAN AREA DELINEATED ADJACENT TO THE MILL POND COMPLEX RESTORATION AREA
	APPROXIMATE 50-FOOT BUFFER

NOTES:
 1. THE TOPOGRAPHIC INFORMATION SHOWN REPRESENTS CURRENT FIELD CONDITIONS.



FORMER GEORGIA-PACIFIC WOOD PRODUCTS FACILITY
 FORT BRAGG, CALIFORNIA
**MILL POND COMPLEX RESTORATION
 DRAFT CONCEPTUAL DESIGN REPORT**

**OUE-LOWLAND AND MAPLE CREEK
 DRAFT CONCEPTUAL PLAN**



FIGURE
4-2



LEGEND:
 Land Use Plan

- - - Specific Plan Area Boundary
- - - District Boundary
- - - Conceptual Neighborhood Park Location
- - - Alternative Neighborhood Park Location
- Proposed Footprint of Conceptual Restoration Design
- 50-foot Buffer
- Mill Site Residential (MR)
- Mill Site Commercial Mixed Use (MSCMU)
- Mill Site Visitor Services (MSVS)
- Mill Site Mixed Use Residential (MSARU) - R
- Mill Site Light Industrial Flex (MSLIF)
- Future Coastal Trail and Parkland Area
- Open Space
- Mill Site Highway Commercial (MSHC)
- Mill Site Industrial (MSI)
- Mill Site Mixed Use Employment Zone (MSUETZ)
- Mill Site Urban Reserve (MSUR)
- Restricted Land Use Area
- Public Facilities
- Timber Resources Industrial
- Opportunity / Use Priority Sites

FORMER GEORGIA-PACIFIC WOOD PRODUCTS FACILITY
 FORT BRAGG, CALIFORNIA

MILL POND COMPLEX RESTORATION DRAFT CONCEPTUAL DESIGN REPORT

**CONCEPTUAL RESTORATION DESIGN
 AND PROPOSED LAND USE PLAN**



FIGURE
 | 5-1

BASEMAP SOURCE: LAND USE PLAN (FEBRUARY 2011) AS DEVELOPED FOR THE MILL SITE SPECIFIC PLAN